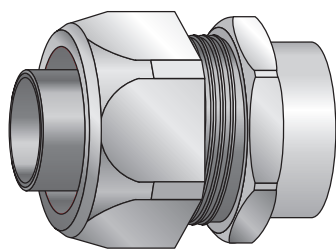


Raccordi metallici standard per guaine LFMC e LFNC-B



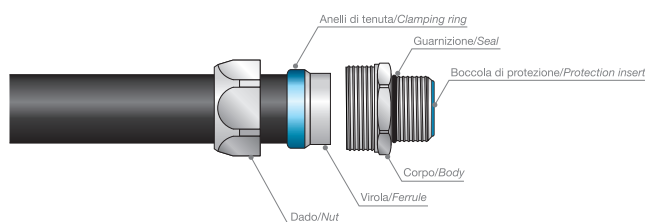
Standard metal fittings for LFMC and LFNC-B conduits



Impiego - Use

Raccordi metallici per guaine metalliche rivestite LFMC e per guaine rinforzate LFNC-B. Gli elementi principali del raccordo sono in ottone nichelato e garantiscono pertanto una ottima resistenza alla corrosione. All'interno sono dotati di una boccola per proteggere i cavi dallo sfregamento.

Metal fittings for LFMC coated metal conduits and LFNC-B reinforced conduits. The main elements of the fittings are made of nickel plated brass and they offer great corrosion resistance. Inside they are equipped with an insert to protect cables from rubbing.



Dati Tecnici - Technical data

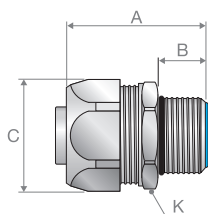
Caratteristica - Characteristics	Valore/proprietà - Value/property
Costruzione <i>Construction</i>	Raccordi costituiti da 6 elementi: corpo, dado di bloccaggio, anello di tenuta, virola, boccola di protezione, guarnizione* <i>Fittings made of 6 parts: body, counter nut, clamping ring, ferrule, protection insert, sealing gasket*</i>
Materiale <i>Material</i>	Dado di bloccaggio e corpo in ottone nichelato, virola in acciaio zincato per le misure 3/8"-1" mentre in ottone nichelato per tutte le altre misure, anello di tenuta e boccola di protezione in poliammide PA6. Le ghiere esagonali sono in ottone nichelato. <i>Counter nut and body are made of nickel plated brass, ferrule is made of galvanized steel for 3/8"-1" sizes and of nickel plated brass for the other sizes, clamping ring and protection insert are made of PA6 polyamide.</i>
Temperatura minima di esercizio <i>Minimum working temperature</i>	-45°C (per raccordi pressacavo -40°C) <i>-45°C (for cable-hose fittings -40°C)</i>
Temperatura massima di esercizio <i>Maximum working temperature</i>	+105°C (per raccordi pressacavo +100°C) <i>+105°C (for cable-hose fittings +100°C)</i>
Grado di protezione <i>Protection class</i>	IP65 per raccordi girevoli, IP68 per raccordi pressacavo collegati alla cassetta, IP67 per tutti gli altri raccordi <i>IP65 for swivel fittings, IP68 with cable-hose fittings on the switchbox, IP67 for other fittings</i>
Guaine compatibili <i>Compatible conduits</i>	LFMC, LFNC-B

* Per i raccordi in versione NPT la guarnizione non è inclusa.

* For NPT version fittings sealing gasket is not included.

Codifiche e dimensioni - Coding and dimensions

Raccordo diritto maschio - Straight male fitting



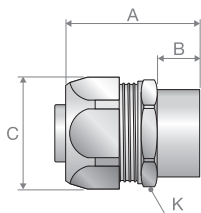
Codice <i>Code</i>	Versione <i>Version</i>	Filetto <i>Thread</i>	Dimensione guaina <i>Conduit size</i>	Passaggio utile <i>Min. internal bore [mm]</i>	Dimensioni <i>Sizes [mm]</i>				Confezione <i>Packaging [pz]</i>
					A	B	C	K	
AN812.016.1	ISO	M16x1,5	3/8"	10,2	35	12	26	24	10
AN812.017.1	ISO	M20x1,5	3/8"	10,2	36	13	26	24	10
AN812.020.1	ISO	M20x1,5	1/2"	13,9	37	13	29	27	10
AN812.025.1	ISO	M25x1,5	3/4"	18,5	40	15	35	33	5
AN812.032.1	ISO	M32x1,5	1"	23,8	46	15	45	43	5

Codice Code	Versione Version	Filetto Thread	Dimensione guaina Conduit size	Passaggio utile Min. internal bore [mm]	Dimensioni Sizes [mm]				Confezione Packaging [pz]
					A	B	C	K	
AN812.040.1	ISO	M40x1,5	1" 1/4	31,8	52	16	54	52	2
AN812.050.1	ISO	M50x1,5	1" 1/2	36,8	56	18	63	60	2
AN812.063.1	ISO	M63x1,5	2"	47,8	66	20	77	74	2
AN810.011.1	PG	11	3/8"	10,2	35	12	26	24	10
AN810.013.1	PG	13,5	3/8"	10,2	35	12	26	24	10
AN810.016.1	PG	16	1/2"	13,9	37	13	29	27	10
AN810.021.1	PG	21	3/4"	18,5	40	15	35	33	5
AN810.029.1	PG	29	1"	23,8	46	15	45	43	5
AN810.036.1	PG	36	1" 1/4	31,8	52	16	54	52	2
AN810.042.1	PG	42	1" 1/2	36,8	56	18	63	60	2
AN810.048.1	PG	48	2"	47,8	66	20	77	74	2
AN814.012.1 ⁽¹⁾	NPT	1/2"	3/8"	10,2	35	12	26	24	10
AN814.016.1 ⁽¹⁾	NPT	1/2"	1/2"	13,9	37	13	29	27	10
AN814.020.1 ⁽¹⁾	NPT	3/4"	3/4"	18,5	40	15	35	33	5
AN814.026.1 ⁽¹⁾	NPT	1"	1"	23,8	46	15	45	43	5
AN814.035.1 ⁽¹⁾	NPT	1" 1/4	1" 1/4	31,8	52	16	54	52	2
AN814.040.1 ⁽¹⁾	NPT	1" 1/2	1" 1/2	36,8	56	18	63	60	2
AN814.050.1 ⁽¹⁾	NPT	2"	2"	47,8	66	20	77	74	2

(1) Per i raccordi in versione NPT la guarnizione non è inclusa.

(1) For NPT version fittings sealing gasket is not included.

Raccordo diritto femmina - Straight female fitting

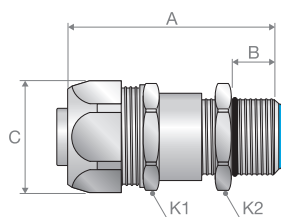


Codice Code	Versione Version	Filetto Thread	Dimensione guaina Conduit size	Passaggio utile Min. internal bore [mm]	Dimensioni Sizes [mm]				Confezione Packaging [pz]
					A	B	C	K	
AN812.316.1	ISO	M16x1,5	3/8"	10,2	35	12	26	24	10
AN812.320.1	ISO	M20x1,5	1/2"	13,9	37	13	29	27	10
AN812.325.1	ISO	M25x1,5	3/4"	18,5	40	15	35	33	5
AN812.332.1	ISO	M32x1,5	1"	23,8	46	15	45	43	5
AN812.340.1	ISO	M40x1,5	1" 1/4	31,8	52	16	54	52	2
AN812.350.1	ISO	M50x1,5	1" 1/2	36,8	56	18	63	60	2
AN812.363.1	ISO	M63x1,5	2"	47,8	66	20	77	74	2
AN810.313.1	PG	13,5	3/8"	10,2	35	12	26	24	10
AN810.316.1	PG	16	1/2"	13,9	37	13	29	27	10
AN810.321.1	PG	21	3/4"	18,5	40	15	35	33	5
AN810.329.1	PG	29	1"	23,8	46	15	45	43	5
AN810.336.1	PG	36	1" 1/4	31,8	52	16	54	52	2
AN810.342.1	PG	42	1" 1/2	36,8	56	18	63	60	2
AN810.348.1	PG	48	2"	47,8	66	20	77	74	2
AN814.312.1	NPT	1/2"	3/8"	10,2	37	13	26	24	10
AN814.316.1	NPT	1/2"	1/2"	13,9	37	13	29	27	10
AN814.320.1	NPT	3/4"	3/4"	18,5	40	15	35	33	5
AN814.326.1	NPT	1"	1"	23,8	46	15	45	43	5
AN814.335.1	NPT	1" 1/4	1" 1/4	31,8	52	16	54	52	2
AN814.340.1	NPT	1" 1/2	1" 1/2	36,8	56	18	63	60	2
AN814.350.1	NPT	2"	2"	47,8	66	20	77	74	2

I raccordi diritto femmina sono omologati cURus.

The straight female fittings are cURus certified.

Raccordo pressacavo diritto maschio - Cable-hose straight male fitting

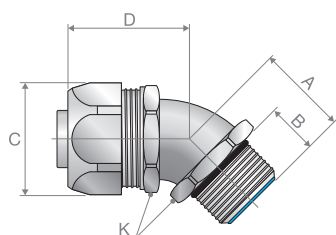


Codice Code	Versione Version	Filetto Thread	Dimensione guaina Conduit size	Diametro del cavo Cable diameter Min/Max [mm]	Dimensioni Sizes [mm]					Confezione Packaging [pz]
					A	B	C	K1	K2	
AN810.712.1	PG	9	3/8"	5÷8,3	55	10	26	24	20	10
AN810.711.1	PG	11	3/8"	5÷10,2	55	10	26	24	20	10
AN810.715.1	PG	13,5	1/2"	6÷12	57	10	29	27	22	10
AN810.716.1	PG	16	1/2"	10÷13,9	60	10	29	27	24	10
AN810.721.1	PG	21	3/4"	13÷18	67	12	35	33	30	5
AN810.729.1	PG	29	1"	18÷23,8	80	12	45	43	40	5

I raccordi pressacavo diritto maschio sono privi di omologazione UL/CSA.

The cable-hose straight male fittings are without UL/CSA approval.

Raccordo maschio 45° - 45° male fitting

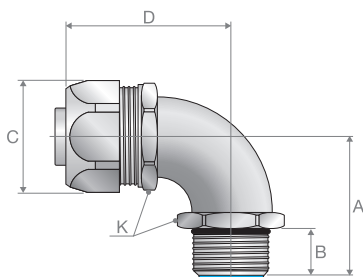


Codice Code	Versione Version	Filetto Thread	Dimensione guaina Conduit size	Passaggio utile Min. internal bore [mm]	Dimensioni Sizes [mm]					Confezione Packaging [pz]
					A	B	C	K1	K2	
AN812.416.1	ISO	M16x1,5	3/8"	10,2	23	12	26	33	22	10
AN812.417.1	ISO	M20x1,5	3/8"	10,2	23	12	26	33	22	10
AN812.420.1	ISO	M20x1,5	1/2"	13,9	25	13	29	33	27	10
AN812.425.1	ISO	M25x1,5	3/4"	18,5	30	15	35	36	33	5
AN812.432.1	ISO	M32x1,5	1"	23,8	34	15	45	46	42	5
AN812.440.1	ISO	M40x1,5	1" 1/4	31,8	39	16	54	54	51	2
AN812.450.1	ISO	M50x1,5	1" 1/2	36,8	45	18	63	59	60	2
AN812.463.1	ISO	M63x1,5	2"	47,8	53	20	77	71	74	2
AN810.411.1	PG	11	3/8"	10,2	23	12	26	33	22	10
AN810.413.1	PG	13,5	3/8"	10,2	23	12	26	33	22	10
AN810.416.1	PG	16	1/2"	13,9	25	13	29	33	27	10
AN810.421.1	PG	21	3/4"	18,5	30	15	35	36	33	5
AN810.429.1	PG	29	1"	23,8	34	15	45	46	42	5
AN810.436.1	PG	36	1" 1/4	31,8	39	16	54	54	51	2
AN810.442.1	PG	42	1" 1/2	36,8	45	18	63	59	60	2
AN810.448.1	PG	48	2"	47,8	53	20	77	71	74	2
AN814.412.1 ⁽¹⁾	NPT	1/2"	3/8"	10,2	23	12	26	33	22	10
AN814.416.1 ⁽¹⁾	NPT	1/2"	1/2"	13,9	25	13	29	33	27	10
AN814.420.1 ⁽¹⁾	NPT	3/4"	3/4"	18,5	30	15	35	36	33	5
AN814.426.1 ⁽¹⁾	NPT	1"	1"	23,8	34	15	45	46	42	5
AN814.435.1 ⁽¹⁾	NPT	1" 1/4	1" 1/4	31,8	39	16	54	54	51	2
AN814.440.1 ⁽¹⁾	NPT	1" 1/2	1" 1/2	36,8	45	18	63	59	60	2
AN814.450.1 ⁽¹⁾	NPT	2"	2"	47,8	53	20	77	71	74	2

(1) Per i raccordi in versione NPT la guarnizione non è inclusa.

(1) For NPT version fittings sealing gasket is not included.

Raccordo maschio 90° - 90° male fitting

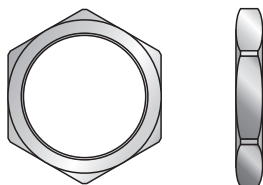


Codice Code	Versione Version	Filetto Thread	Dimensione guaina Conduit size	Passaggio utile Min. internal bore [mm]	Dimensioni Sizes [mm]					Confezione Packaging [pz]
					A	B	C	D	K	
AN812.916.1	ISO	M16x1,5	3/8"	10,2	32	12	26	42	22	10
AN812.917.1	ISO	M20x1,5	3/8"	10,2	32	12	26	42	22	10
AN812.920.1	ISO	M20x1,5	1/2"	13,9	36	13	29	43	27	10
AN812.925.1	ISO	M25x1,5	3/4"	18,5	43	15	35	48	33	5
AN812.932.1	ISO	M32x1,5	1"	23,8	48	15	45	59	42	5
AN812.940.1	ISO	M40x1,5	1" 1/4	31,8	57	16	54	68	51	2
AN812.950.1	ISO	M50x1,5	1" 1/2	36,8	63	18	63	78	60	2
AN812.963.1	ISO	M63x1,5	2"	47,8	74	20	77	96	74	2
AN810.913.1	PG	13,5	3/8"	10,2	32	12	26	42	22	10
AN810.916.1	PG	16	1/2"	13,9	36	13	29	43	27	10
AN810.921.1	PG	21	3/4"	18,5	43	15	35	48	33	5
AN810.929.1	PG	29	1"	23,8	48	15	45	59	42	5
AN810.936.1	PG	36	1" 1/4	31,8	57	16	54	68	51	2
AN810.942.1	PG	42	1" 1/2	36,8	63	18	63	78	60	2
AN810.948.1	PG	48	2"	47,8	74	20	77	96	74	2
AN814.912.1 ⁽¹⁾	NPT	1/2"	3/8"	10,2	32	12	26	42	22	10
AN814.916.1 ⁽¹⁾	NPT	1/2"	1/2"	13,9	36	13	29	43	27	10
AN814.920.1 ⁽¹⁾	NPT	3/4"	3/4"	18,5	43	15	35	48	33	5
AN814.926.1 ⁽¹⁾	NPT	1"	1"	23,8	48	15	45	59	42	5
AN814.935.1 ⁽¹⁾	NPT	1" 1/4	1" 1/4	31,8	57	16	54	68	51	2
AN814.940.1 ⁽¹⁾	NPT	1" 1/2	1" 1/2	36,8	63	18	63	78	60	2
AN814.950.1 ⁽¹⁾	NPT	2"	2"	47,8	74	20	77	96	74	2

(1) Per i raccordi in versione NPT la guarnizione non è inclusa.

(1) For NPT version fittings sealing gasket is not included.

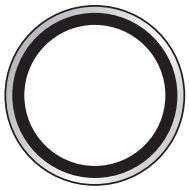
Ghiere esagonali - Hexagonal lock nut



Codice Code	Versione Version	Filetto Thread	Confezione Packaging [pz]
AN880.116.0	ISO	M16	50
AN880.120.0	ISO	M20	50
AN880.125.0	ISO	M25	25
AN880.132.0	ISO	M32	20
AN880.140.0	ISO	M40	10
AN880.150.0	ISO	M50	10
AN880.163.0	ISO	M63	5
AN880.011.0	PG	11	50
AN880.013.0	PG	13,5	50
AN880.016.0	PG	16	50

Codice <i>Code</i>	Versione <i>Version</i>	Filetto <i>Thread</i>	Confezione <i>Packaging [pz]</i>
AN880.021.0	PG	21	20
AN880.029.0	PG	29	20
AN880.036.0	PG	36	10
AN880.042.0	PG	42	5
AN880.048.0	PG	48	5
AN880.216.0	NPT	1/2"	50
AN880.220.0	NPT	3/4"	20
AN880.226.0	NPT	1"	20
AN880.235.0	NPT	1"1/4	20
AN880.240.0	NPT	1"1/2	10
AN880.250.0	NPT	2"	10

Guarnizioni con anello di supporto - Sealing gasket with back plate



Codice <i>Code</i>	Versione <i>Version</i>	Filetto <i>Thread</i>	Confezione <i>Packaging [pz]</i>
TB5262	NPT	1/2"	50
TB5263	NPT	3/4"	25
TB5264	NPT	1"	25
TB5265	NPT	1"1/4	5
TB5266	NPT	1"1/2	5
TB5267	NPT	2"	5
TB5268	NPT	2"1/2	1